



The Wileman Square Shape

(Also initially called Square Queen Anne Shape)

‘A Study of the History and Patterns Utilized’

Compiled by Dick Gapen

Version 1.1, October, 2019

USE RESTRICTIONS

- Information provided in this study is accurate to the best of my knowledge and research to date.
- This study may not be copied, reproduced, modified or distributed in any form whatsoever outside of Shelley Club members without the written permission of the author.
- The Wileman / Shelley Pattern Books are copywrite protected by WWRD, United Kingdom Ltd. and the City Archive, Stoke on Trent. Pictures and data from the Pattern Books contained in this study may not be copied reproduced or distributed in any form whatsoever without their written permission.

Sources of information for this study

This collection of pictures and information about the Wileman Square Shape, and the patterns used with the Square Shape, was made possible through the very generous help and valuable contributions from the following:

- Jill Burridge (UK)
- Chris Davenport (UK)
- Brian Hill (UK)
- Gerry Pearce (UK)
- Peter Porrazzo (US)
- Glenys Ryall (NZ)
- Bruce Sandie (Australia)
- Members from all 4 Shelley Clubs worldwide who generously provided photographs and information from their personal collections.
- The Pattern Book pictures and data reproduced with the kind permission of WWRD, United Kingdom Ltd. and the City Archive, Stoke on Trent.

If you have a Wileman Square shape pattern and/or color variation that is not represented by a photograph in this study, please send me a color digital picture of it, and it's backmark, so it can be added.

My email address is: rdgapen@comcast.net

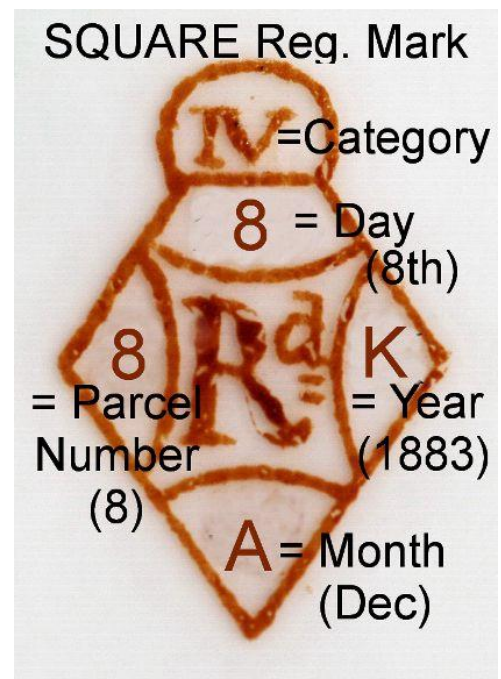
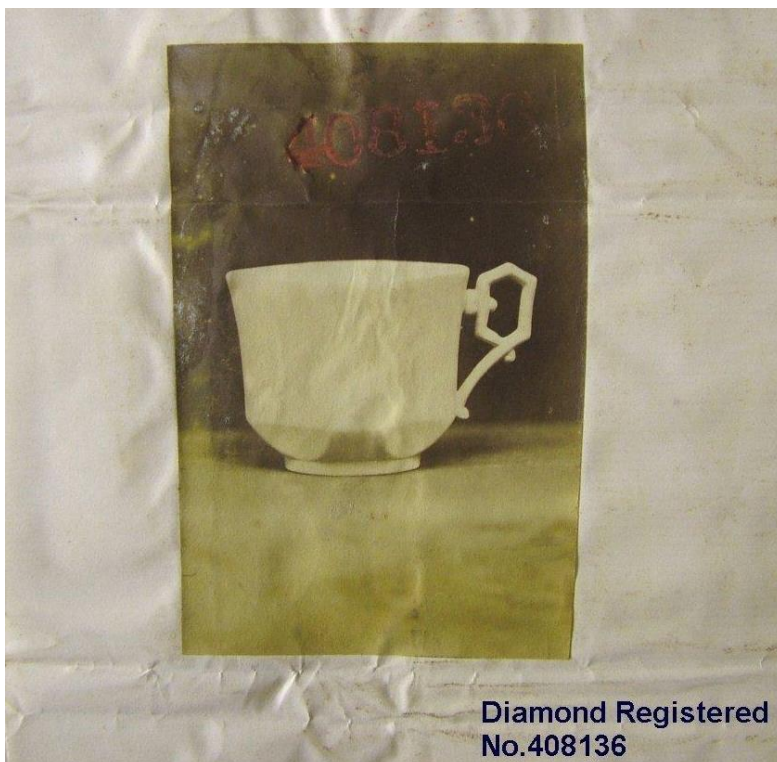
Thank you.

Dick Gapen

The Wileman Square Shape

- The first shape registered by Wileman & Co.
Initially registered under the old “Diamond” mark on December 8, 1883.
- Re-registered under the new, numbered Registration System as Rd. No. 6559 on May 8, 1884.
- The only Wileman/Shelley shape to be registered twice.
- Production of the Square Shape was generally discontinued by Wileman & Co. prior to 1889.

1883 “Diamond Registered” Document Rd 408136



December 8, 1883

The New 1884 Registered Document “Rd. 6559”



May 8, 1884

The Wileman Pattern Books

- The 1st existing Wileman Pattern Book begins with pattern # 3348 and ends with pattern # 4966.
- The first pattern used on a Square Shape is # 3476, and the last known pattern is # 3776.
- It is assumed that all numbered patterns used on the Square Shape are found in the 1st Pattern Book. An exception is # 7843 in the 5th Pattern Book which appears to be a re-issue of # 3567.
- In the Pattern Books, Square Shape use is indicated as either: “QA”; “QA Square”; “Square”; “Queen Anne”; “Queen Anne Square”; or as a pattern drawing illustrated a Square shaped plate depiction.

Profiles of Square Cup, Handle, Saucer, Bread plate, Dinner plate



Evolution of the Square Shape



'Albert' was initially called 'Jubilee Flute'.

Backmarks

No examples of an 1883 diamond backmarked Square Shape are known to exist.

Backmarks on Square Shapes are inconsistent regarding content.

Under the “new” 1884 British registration system, all Square backmarks must include either a “Rd 6559” stamp or impressed mark.

In addition to a “Rd 6559” mark, Square backmarks may also include one or more of the following:

- the early Wileman & Co symbol
- a Registered Pattern Rd #
- a Wileman & Co pattern #.

Some examples of known backmarks:



Sizes of Square - Cups

	Width	Height	Cup Base
Cabaret Cup	7.0 cm	6.1 cm	4.0 cm
Tea Cup	7.9 cm	6.5 cm	4.5 cm
Breakfast & Moustache Cups	9.2 cm	7.2 cm	5.3 cm

- Note 1: No Square bouillon cups (two handles), or miniature cups are known to exist.
- Note 2: All measurements are made across the convex and/or flats (not concave sections).
- Note 3: Dimensional differences may occur as a result of shrinkage while being fired.

Sizes of Other Square Pieces

	Saucer	Bread Plate	Dinner Plate	Milk Pitcher	Sugar Bowl	Teapot
Cabaret:	12.3(w)	n/a	n/a	7.3(w) @base 9.1 (h)	11.0(w) @top 6.7(h)	11.6(w) @base 15.8(w) @top
Tea:	12.2(w)	17.3	22.2(w)*	8.2(w) @base 10.2(h)	15.1(w) @top 9.1(h)	13.6(w) @base 19.4(w) @top
Breakfast & Moustache	14.4(w)	n/a	n/a	n/a	n/a	n/a

- Note 1: All measurements are made across the convex and/or flats (not concave sections).
- Note 2: All dimensions are in centimeters.
- Note 3: Dimensional differences may occur as a result of shrinkage while being fired.
- The Dinner Plate dimension does not include the “handles”.

Square Cup Sizes



Cabaret	Tea	Breakfast/Moustache
7.0 cm wide @ top 5.6 cm high	7.9 cm wide @ top 7.0 cm high	9.2 cm wide @ top 7.6 cm high

Square Pot Sizes



Regular pot	Cabaret pot
19.4 cm high (w/lid) 13.6 wide @base	15.8 cm high (w/lid) 11.6 wide @base

Square Sugar Bowl Size



Regular Sugar Bowl	Cabaret Sugar Bowl
9.1 cm high 15.1 cm wide @ top	6.7 cm high 11.0 cm wide @ top

Square Milk Pitcher Sizes



Regular Milk Pitcher	Cabaret Milk Pitcher
10.8 cm high 8.2 cm wide @ base	9.1 cm high 7.3 cm wide @ base

Pattern Nos. & Pattern Registration

- **Pattern Numbers** were assigned by Wileman & Co. to identify each color variation of a pattern produced. In many cases these numbers were not included as part of the backmark.
- For a **Registered Pattern**, the Registration Number “Rd No yyyyyy” will be displayed on the backmark of the piece. (Usually under the early Wileman symbol.)

The “**Special**” patterns shown in this study do not appear in the 1st Pattern Book, but are included due to their identifiable Square shape and the required Square shape Registration Number (Rd. No. 6559) appearing on the backmark.

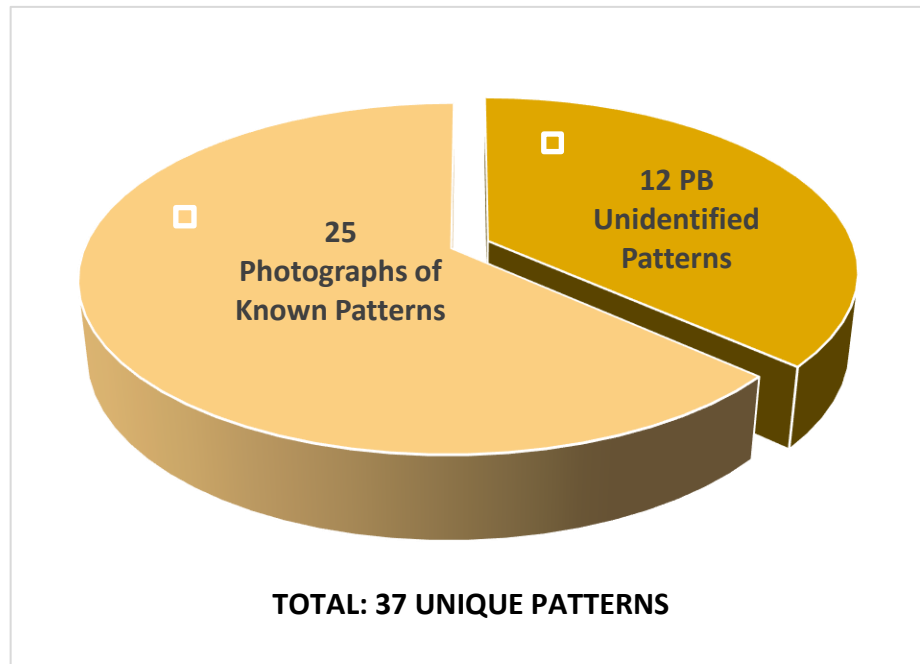
Terms used in this study:

- Pattern names: If an asterisk (*) is shown following the name, it indicates that the name appears in the Pattern Book for the pattern.
- Other pattern names were possibly chosen by Knight & Hill for inclusion in their book “[Wileman, A Collectors Guide](#)”, 1995.
- The use of the term “**verifiedPB**” indicates that the Wileman pattern number appears in the Pattern Book as being used on a Square Shape, but does not necessarily appear as part of the backmark.
- The use of the term “**verifiedBM**” indicates that the pattern number is included as part of the backmark, as well as appearing in the Pattern Book.
- Pattern numbered color variations that are **highlighted in yellow** represent examples of colors that are not pictured in this study due to their unavailability to be photographed.
- “**Pattern book description only**” indicates that an illustration of a numbered Square pattern exists in the Pattern Book, but a photograph of an example of the pattern was unavailable.

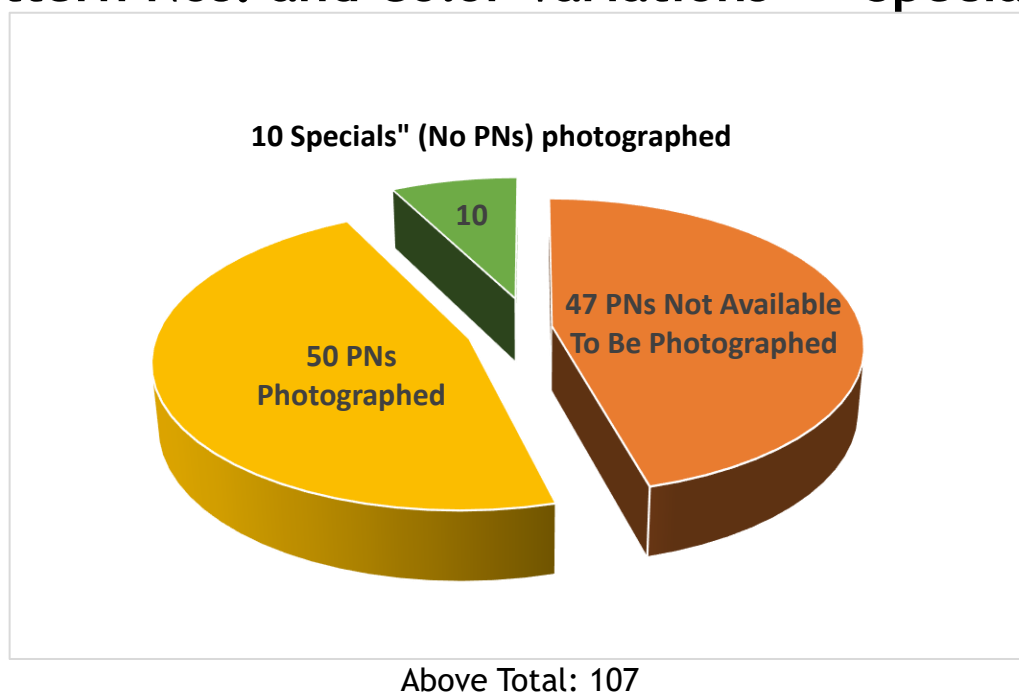
Summary of Wileman Square Shape Study:

- There are 37 unique patterns identified in the 1st Pattern Book that were used on the Square Shape. Of these, 25 are illustrated by photographs, with the remaining 12 unidentified, and are represented by drawings and/or mention in the Pattern Book.
- In all, there are 97 pattern numbers representing pattern color variations assigned to the Square Shape. 50 of these pattern numbers are represented by photographs. The remaining 47 are not included due to their unavailability to be photographed.
- This study includes 10 photographs of known “**Special**” patterns that were neither illustrated in the Pattern Books, nor assigned pattern #s. However, one of these “Specials” was a Registered Pattern (Rd No 64761, Queen Victoria’s 50th Jubilee).

Unique Square Patterns Found in the 1st Pattern Book



Pattern Nos. and Color Variations + “Specials”



The 37 following **unique** patterns and associated color variations are shown below:

Pattern # 3476 - Japan *

verifiedBM

Trio



Cabaret Set *

verifiedBM



Earthenware Tray for Cabaret Set *



Wild Roses & Butterflies *

as 3448

#3489	Wild Roses & Butterflies	filled in color
#3491	Wild Roses & Butterflies	text in Pattern book is unreadable
#3492	Wild Roses & Butterflies	Salmon (color 45)
#3493	Wild Roses & Butterflies	Ivory (color 40)
#3619	Wild Roses & Butterflies	Enameled - re-issue as 3448

Color variations specified in Wileman Pattern Book.

Pattern # 3489 Wild Roses & Butterflies *

verifiedBM



Blackberry *

#3490	Blackberry	
#3496	Blackberry	ivory (color 40)
#3497	Blackberry	text in Pattern Book is unreadable

Color variations specified in Wileman Pattern Book.

Pattern # 3496 -- Blackberry *

verifiedPB



Note: Not to be confused with the later Registered Blackberry pattern Rd No 49676 ([Wileman pattern #s 3576 - 3578](#)).

As 3448

Ivy *

# 3488	Ivy	brown filled with brown & green
# 3494	Ivy	salmon
# 3495	Ivy	ivory
# 3499	Ivy	brown filled with brown & green
# 3542	Ivy	

Color variations specified in Wileman Pattern Book.

Pattern 3488 - Ivy *

brown filled with brown & green

verifiedBM



Pattern # 3494 - Ivy *

salmon

verifiedPB



Clematis *

#3504	Clematis	purple w/back flowers pink
#3505	Clematis	pink w/back flowers yellow
#3506	Clematis	salmon w/back flowers yellow
#3507	Clematis	ivory w/back flowers rose

Color variations specified in Wileman Pattern Book.

Pattern # 3504 Clematis *

purple w/back flowers pink

verifiedBM



Pattern # 3505 Clematis *

pink w/back flowers yellow

verifiedBM



Pattern # 3507 Clematis *

ivory w/back flowers rose

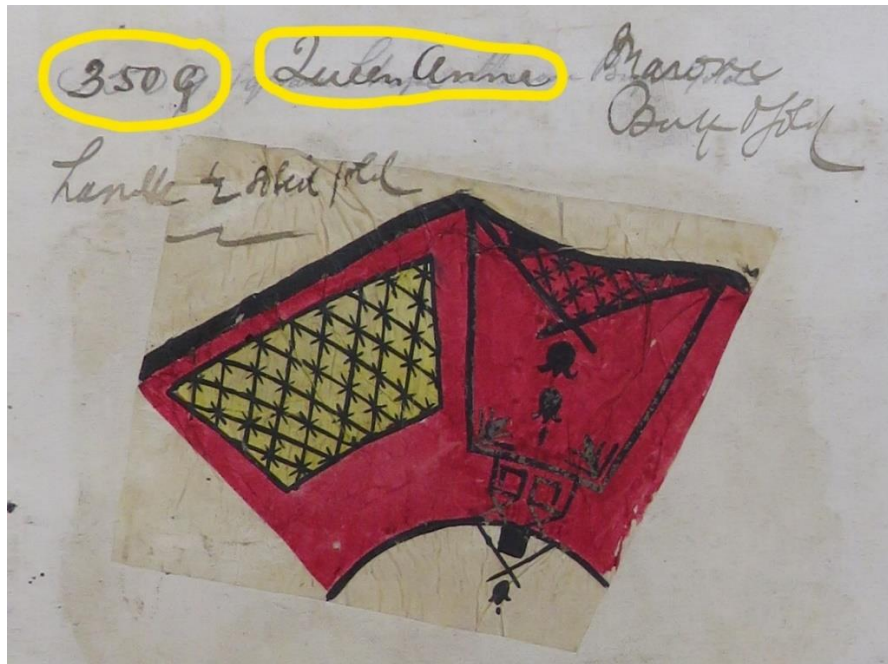
verifiedBM



Note: extremely minor color variations from 3504.

Pattern # 3509 - Not named

Pattern Book description only



Printed Seasons Views*

# 3511	Printed Seasons Views	green
# 3512	Printed Seasons Views	brown
# 3513	Printed Seasons Views	coral red
# 3514	Printed Seasons Views	blue
# 35XX	Printed Seasons Views	orange - <i>color not indicated in the Pattern Book</i>
# 35YY	Printed Seasons Views	pink - <i>color not indicated in the Pattern Book</i>

Color variations specified in Wileman Pattern Book.

Pattern # 3511 - Printed Season Views *

verifiedPB

green



Pattern # 3513 -- Printed Season Views *

verifiedPB

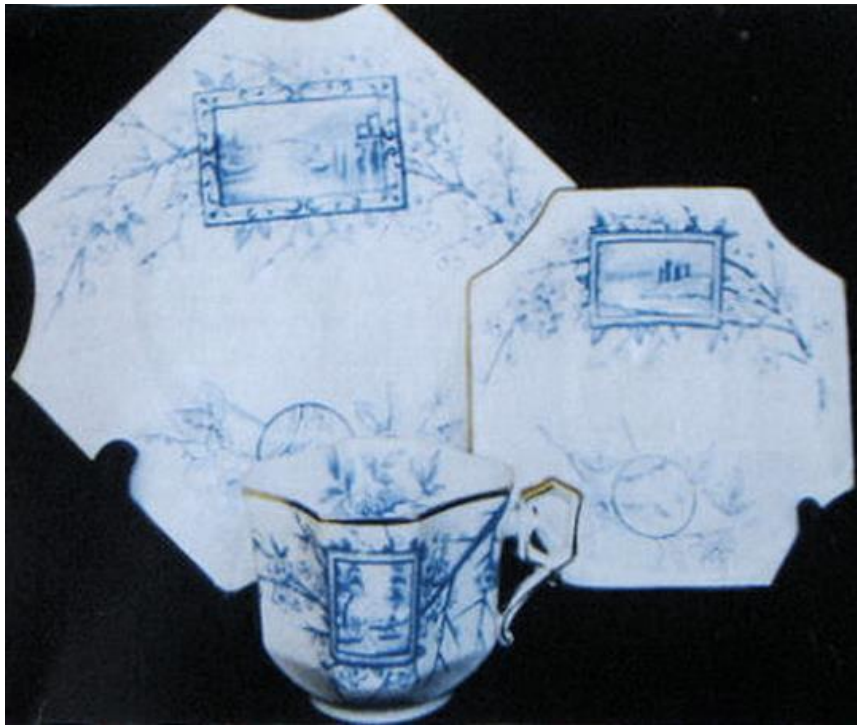
coral red



Pattern # 3514 -- Printed Season Views *

verifiedPB

blue



Pattern # 35xx - Printed Season Views *

orange - Neither shown nor color indicated in the Pattern Book



Pattern # 35yy -- Printed Season Views *

pink - Neither shown nor color indicated in the Pattern Book



Color could possibly be the same as “Coral Red” #3513 ?

Orchids *

# 3529	Orchids	On white
# 3530	Orchids	On salmon
# 3531	Orchids	On ivory

Color variations specified in Wileman Pattern Book.

Pattern # 3529 - Orchids *

verifiedBM

on white



Pattern # 3530 - Orchids *

verifiedBM

salmon



Note: Backmarked as 3529, but the orchid is colored in salmon shown in Pattern Book as being pattern # 3530. See above photo.

Pattern #3532 - Japan - Oriental Flowers verifiedBM



Thistle * - Rd 34404

Registered September 30, 1885.

#3544	Thistle	blue
#3545	Thistle	rose
#3546	Thistle	brown
#3547	Thistle	bronze green

Color variations specified in Wileman Pattern Book.

Pattern # 3544 - Thistle *

verifiedBM

blue



Pattern # 3545 - Thistle *

verifiedPB

rose



Pattern # 3546 -- Thistle *

verifiedPB

brown



Rose

Color variations specified in Wileman Pattern Book.

#3449	Rose	yellow
#3550	Rose	pink
#3551	Rose	ivory, pink rose
#3552	Rose	salmon, yellow rose
#3553	Rose	green, pink rose
#3622	Rose	(re-issue)
#3623	Rose	yellow re-issue
#3624	Rose	pink re-issue

Pattern # 3549 - Rose

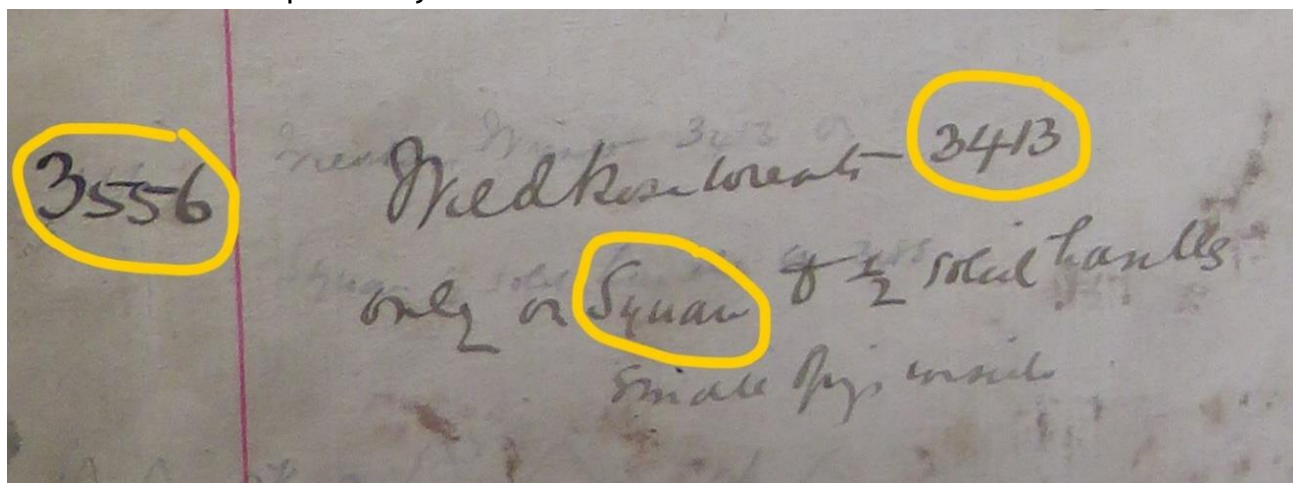
yellow



Very faint impressed Rd 6559

Pattern # 3556 - Wild Rose Wreath *

Pattern Book description only



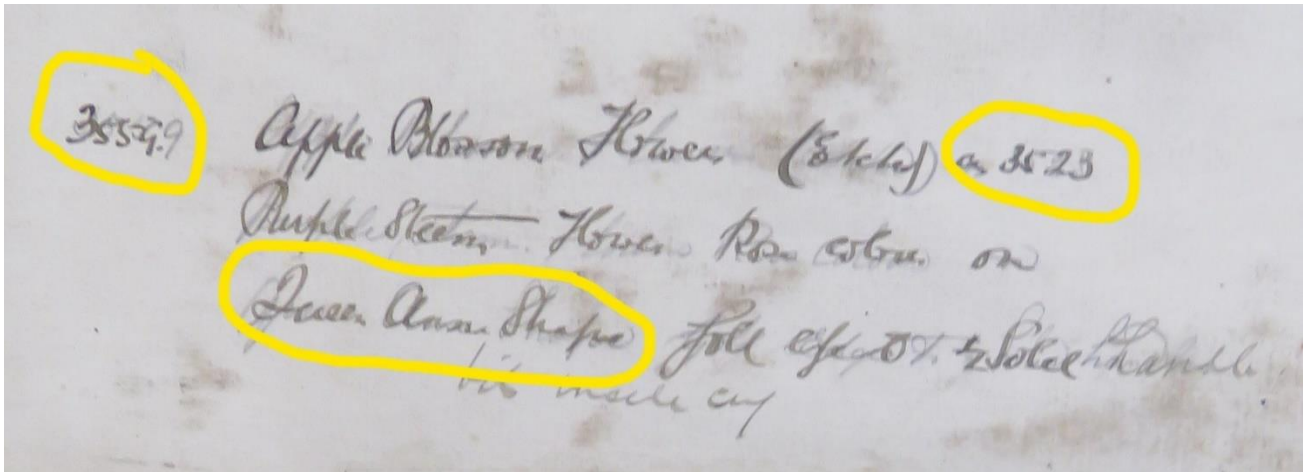
NOTE: The reference back to pattern # 3413. This number does not indicate a shape that initially used this illustrated pattern. It is likely the shape used was either an unregistered Victoria or Worcester.



As 3413

Pattern # 3559 - Apple Blossom Flower *

Pattern Book description only



NOTE: The reference back to pattern # 3523 was apparently not produced until pattern # 3537 which does not indicate a shape.



Japan - Flowers & Tree * - Rd.36808

Registered October 30, 1885.

Pattern #3561	Japan - Flower & Tree	dark blue
Pattern #3563	Japan - Flower & Tree	black

Color variations specified in Wileman Pattern Book.

Pattern # 3561 - Japan - Flowers & Tree *

Verified PB

dark blue



Pattern # 3563 - Japan - Flowers & Tree *

VerifiedBM

black



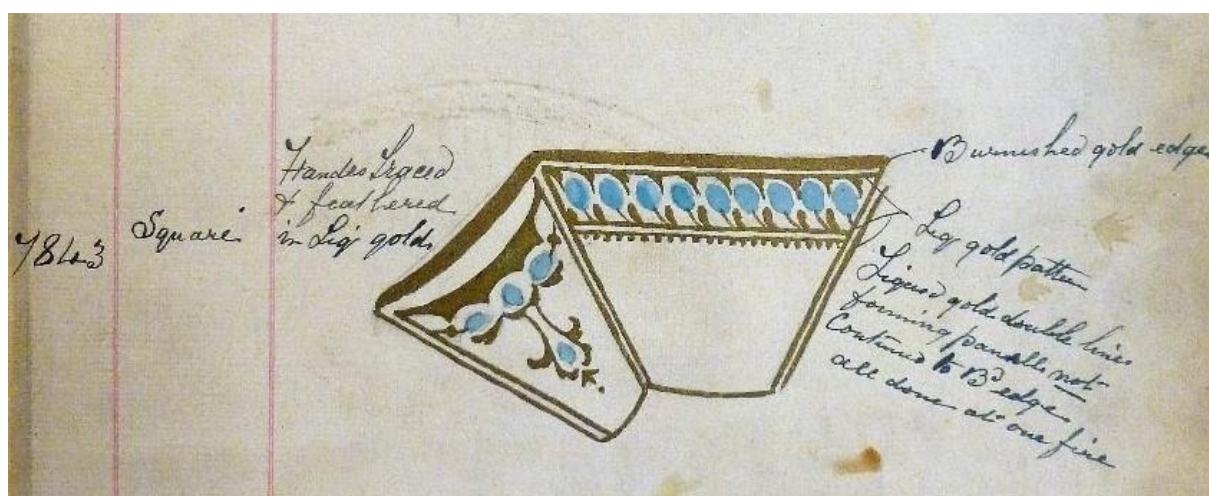
Pattern # 3567 - Turquoise & Gold

verifiedBM



NOTE: Chris Davenport was kind enough to note that this pattern was re-issued as pattern number 7843 in 1904. See the following slide for the pattern book comparison pictures.

NOTE: Pattern # 7843 found in the 5th Pattern Book (1904) which appears to be a copy of Pattern # 3567 (shown above)



Pattern Book drawing of #7843

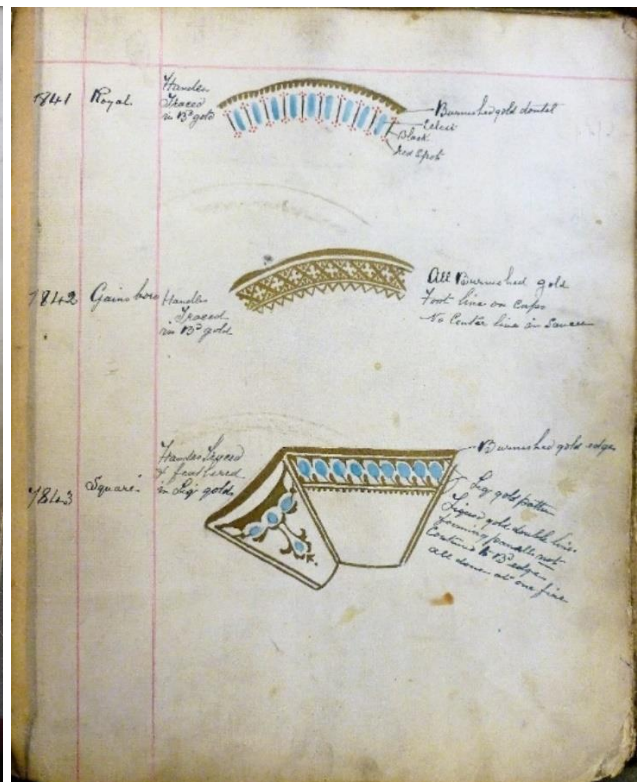


Picture of actual #3567

Comparison of Pattern # 3567 to 7843



3567



7843

Pattern # 3568 - Not named

Pattern Book description only



Note: Identified as Square Shape due to profile of illustrated plate.

Pattern # 3569 - Not named

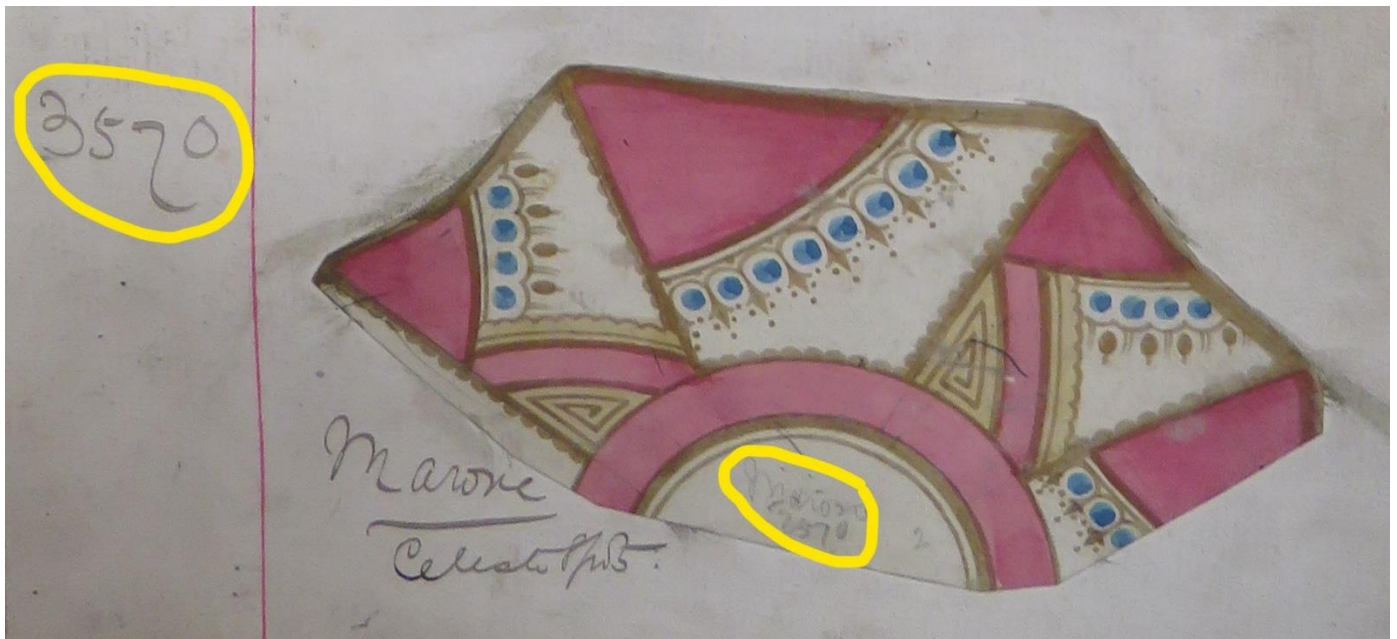
Pattern Book description only



Note: Identified as Square Shape due to profile of illustrated plate.

Pattern # 3570 - Not named

Pattern Book description only



Note: Identified as Square Shape due to profile of illustrated plate.

Pattern # 3571 - Not named

verifiedBM



Pattern # 3572 - Not named

verifiedBM



Pattern # 3573 - Not named

Pattern Book description only



Note: identified as Square Shape due to profile of illustrated plate.

Pattern # 3574 - Not named

Pattern Book description only



Note: identified as Square Shape due to profile of illustrated plate.

Pattern # 3575 - Gilded Red & Turquoise

verifiedBM



Blackberry / Bramble * - Rd. 49676

Registered May 25, 1886.

#3576	Blackberry	blue
#3576/26	Blackberry	grey - <i>color not indicated in Pattern Book</i>
#3577	Blackberry	brown
#3578	Blackberry	rose color
#35XX	Blackberry	purple - <i>color not indicated in Pattern Book</i>
#3676	Bramble	pink* re-issue with name change same pattern as before
#3677	Bramble	blue* re-issue with name change same pattern as before
#3678	Bramble	Brown re-issue with name change same pattern as before

Color variations specified in Wileman Pattern Book with re-entries.

Pattern # 3576 - Blackberry *

verifiedBM

blue



Pattern # 3576/26 -- Blackberry *

verifiedBM

grey - Color not indicated in Pattern Book



Pattern # 3577 -- Blackberry *

verifiedBM

brown



Pattern # 3578 -- Blackberry *

VerifiedBM

rose



Pattern # 3676 Bramble *

VerifiedPB

pink



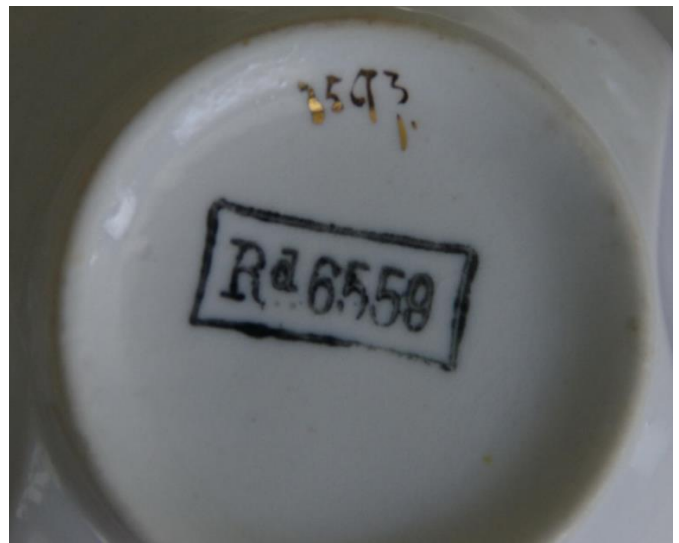
Pattern # xxxx -- Blackberry *

purple - Neither shown nor color indicated in Pattern Book



Pattern # 3593 -- Thistle

verifiedBM



Note: This "Thistle" is a completely different pattern from the earlier Rd No 34404 "Thistle" under pattern #s 3544 - 3547.

Pattern # 3608 - Thistle

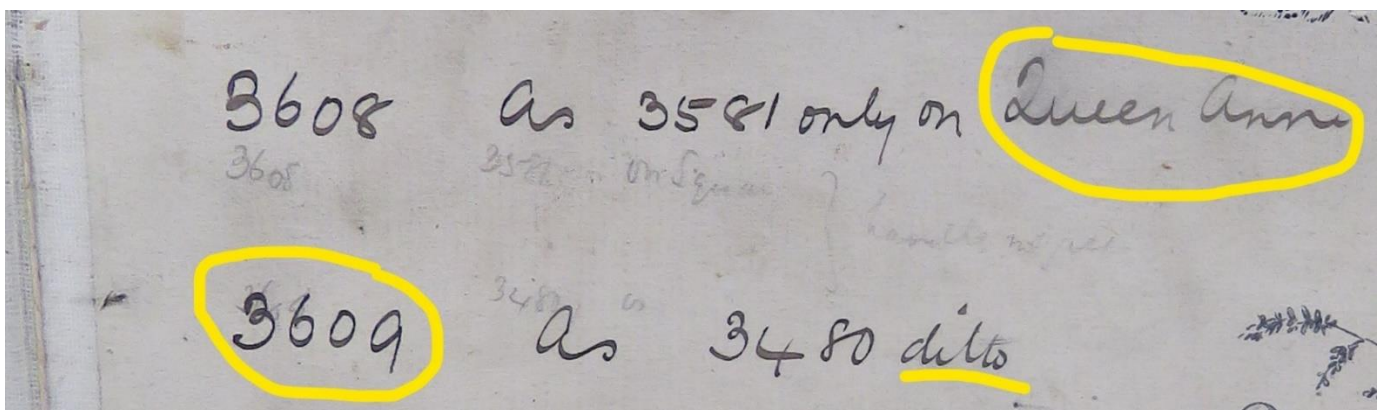
verifiedBM



Note: This “Thistle” is a completely different pattern from the earlier Rd No 34404 “Thistle” under pattern #s 3544 - 3547 and 3593.

Pattern # 3609 - Not Named

Pattern Book descriptions only



Note: 3609 is likely a Square due to the “ditto” following 3608 (which is a confirmed Square as shown on the previous slide). No illustrations are available in the Pattern Book for pattern 3609 as the referenced “as 3480” which only further refers back to 3083 (which is not available).

Clover * - Pattern Rd 57380

Registered September 30 1886

# 3610	Clover	blue
# 3611	Clover	brown
# 3612	Clover	pink
# 3613	Clover	enamelled
# 3621	Clover	red
# 3679	Clover	pink* re-issue
# 3680	Clover	blue re-issue
# 3681	Clover	brown re-issue

Color variations specified in Wileman Pattern Book with re-entries.

Pattern # 3610 - Clover *

verifiedBM

blue



Pattern 3611 - Clover *

brown

verifiedPB



Pattern 3612 -- Clover *

pink

verifiedBM



Pattern # 3613 - Clover *

verifiedBM

enamelled



Pattern # 3613 Clover *

Cabaret Set



Pattern # 3613 Clover *

Cabaret Set Earthenware Tray



43.5 cm length, 30.8 cm width

Note: In addition to the early Wileman & Co. backmark the tray also has an impressed J.F. Wileman eagle mark.

Pattern # 3621 -- Clover *

verifiedPB

red



Scenery *

#3614	Scenery	Blue
#3614	Scenery	Brown
#3614	Scenery	Pink
#3614	Scenery	enamelled
#3614	Scenery	light blue - <i>color not indicated in PB</i>

Color variations specified in Wileman Pattern Book.

Pattern # 3614 - Scenery *

verifiedBM

blue



Pattern # 3615 - Scenery *

verifiedPB

brown



Pattern # 3616 -- Scenery *

verifiedPB

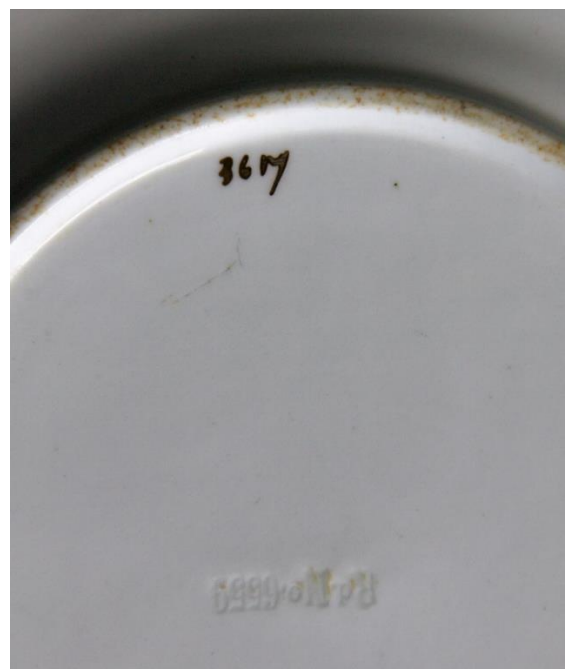
pink



Pattern # 3617 - Scenery *

verifiedBM

enamelled



Pattern # 36xx - Scenery *

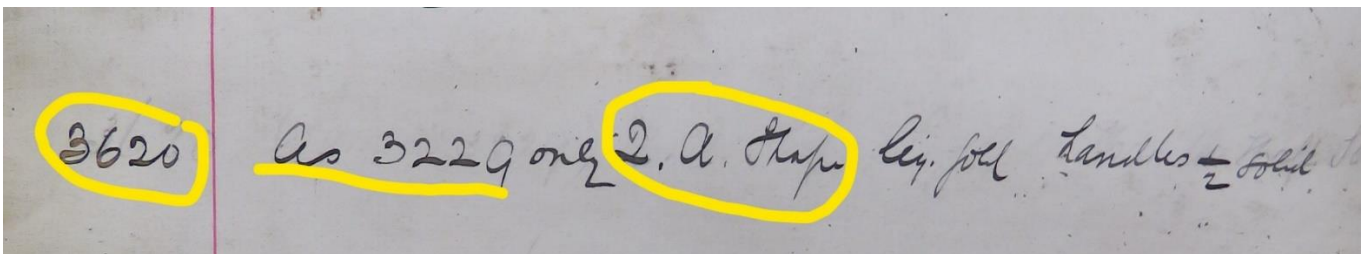
light blue - color not indicated in Pattern Book



Note: Plate's light blue color does not appear to be faded because the bright gilt "handles" still remain intact and bright.

Pattern # 3620 - Not named

Pattern Book description only



"As 3229" - not available for reference

Pattern # 3622 - Not named

verifiedBM



Pattern # 3644 - Black Japan Border - Rd 68702 *

Registered February 25, 1887

verifiedBM



Shamrock *

#3664/26	Shamrock	grey - color not indicated in PB
#3665	Shamrock	blue
#3666	Shamrock	brown
#3667	Shamrock	pink
#3682	Shamrock	pink* re-issue
#3683	Shamrock	blue* re-issue
#3684	Shamrock	brown* re-issue

Color variations specified in Wileman Pattern Book with re-entries.

Pattern # 3664/26 -- Shamrock *

verifiedBM

grey - Color not indicated in Pattern Book.



Note: The pattern # 3664 in the 1st Pattern Book is assigned to a Victoria shaped Bramble pattern.

Pattern # 3665 -- Shamrock *

verifiedPB

blue



Pattern # 3714 - Floral Sprigs

verifiedBM

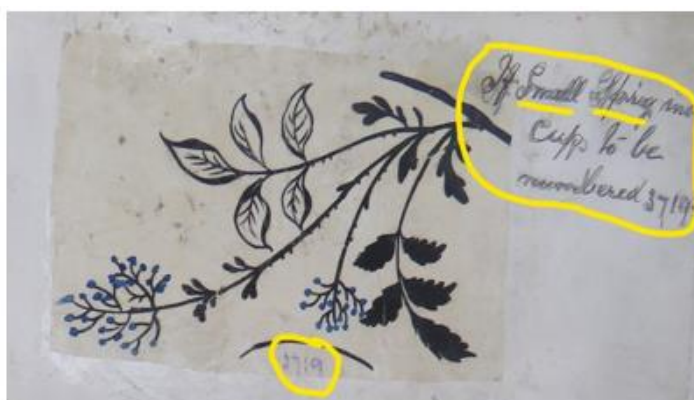
(Large sprig blue dots.)



Pattern # (3717) 3719 - Floral Sprigs

verifiedBM

Small sprig blue dots



See Pattern Book notation renumbering this pattern to 3719.

Pattern Book description only



Registered April 5, 1888

#3759	Honeysuckle	enamelled
#3760	Honeysuckle	pink
#3761	Honeysuckle	brown
#3764	Honeysuckle	pink yellow blue enamelled
#3766	Honeysuckle	red & black re-issue. PB desc. only
#3774	Honeysuckle	all gold (as 3593)

Color variations specified in Wileman Pattern Book.

Pattern # 3759 Honeysuckle *

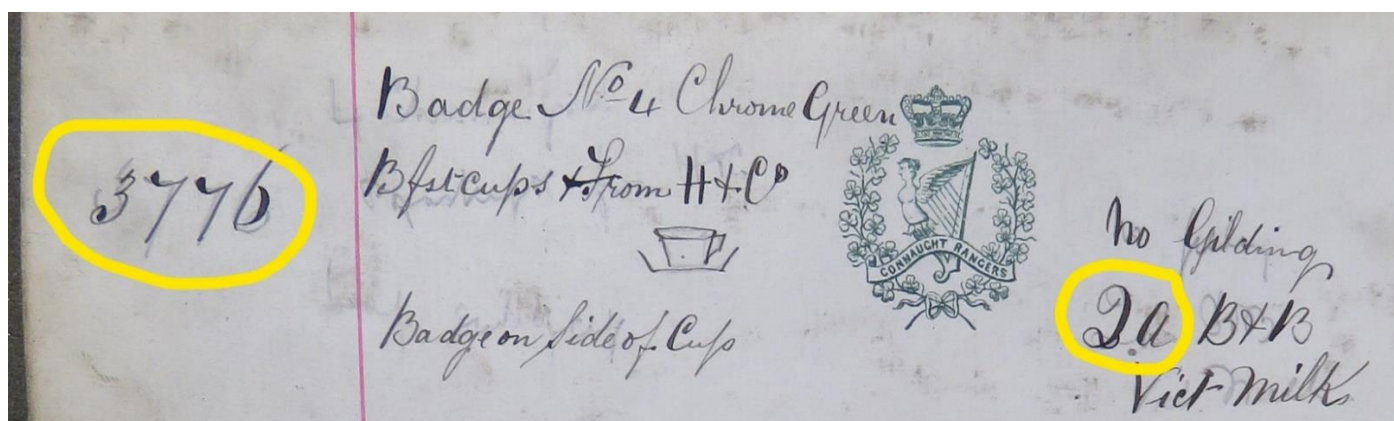
enamelled

verifiedPB



Pattern # 3776 - Badge No. 4

Pattern Book description only

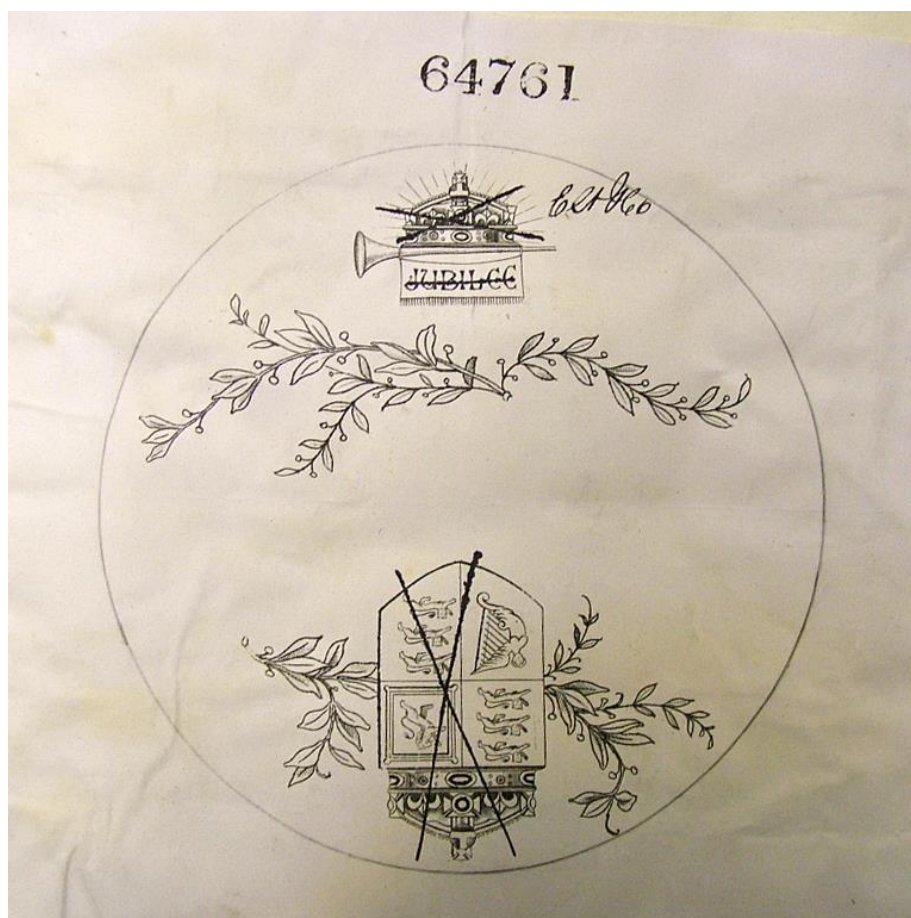


Special Heraldic, Commemorative and Souvenir Patterns on Square Shapes

- The section below features identified heraldic, commemorative and souvenir patterns that were used on Square shaped Wileman china, and that neither appear in the Pattern Book, nor were assigned a Wileman pattern number.
- Currently there is no source of information available that indicates how many of these early patterns were produced on a Square shape.
- It is interesting to note that one souvenir plate shown below represents the dedication of a monument in 1896 that was used a Square plate that supposedly was discontinued on or about 1888.

Queen Victoria's 1887 Jubilee - Rd. No 64761

Pattern Registration Submission - Registered January 4, 1887



Note: Where parts of the pattern registration application was "X"d out, apparently the government authorities felt that the "X"d out portions were public domain and/or owned by the Crown, and wouldn't give Wileman & Co. copyright protection for these specific parts of the submission.

Cup & Saucer

Not shown in Pattern Book-



Pin Dish

Not shown in Pattern Book



Height: 1.9 cm
Width: 7.6 cm
Does NOT show "Rd 6559"

Beaker (1)

Not shown in Pattern Book



Height: 8.5 cm
Width: 6.0 cm at top

Beaker (2)

Not shown in Pattern Book



Height: 10.4 cm
Width: 8.1 cm at top
Does NOT show "Rd 6559"

Small Square Shaped Bowl - smaller than Cabaret sugar bowl)



Height: 5.7 cm
Width: 9.1 cm at top

Milk Pitcher

Not shown in Pattern Book



25th Silver Wedding Anniversary

Not shown in Pattern Book. Pattern No # not assigned.



Commemorating the 25th Wedding Anniversary of future King Edward VII and Queen Alexandra in 1888

Fox Hunting Scenes

Not shown in Pattern Book. Pattern #'s not assigned.



Fox Hunting Scenes 7 color variations

Not shown in Pattern Book. Pattern #'s not assigned.



Unknown Pattern - Vestal Virgins ?

Not shown in Pattern Book. Pattern # not assigned.



Note that the figures illustrated on the cup and saucer are different.

Early Proposal for Australian Coat of Arms

Not shown in Pattern Book. Pattern # not assigned



An early proposal for the Coat of Arms of the Australian Commonwealth. Features a Kangaroo and Emu on opposite sides of the Commonwealth crest that incorporates the motto “Advance Australia”.

Ethan Allen Monument & Billings Library - Burlington, Vermont, USA

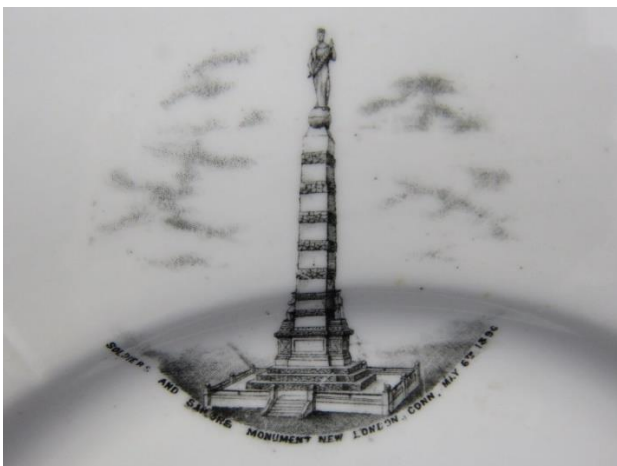
Not shown in Pattern Book. Pattern # not assigned.



Impressed Rd 6559 backmark

Soldiers and Sailors Monument - New London, CT, USA

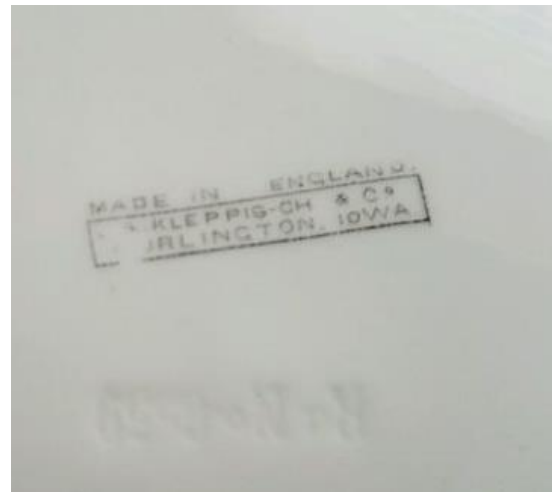
Not shown in Pattern Book. Pattern # not assigned.



Note: The Soldiers and Sailors Monument was dedicated in New London, CT on May 6, 1896. Supposedly Wileman & Co. had discontinued the use of the Square Shape in 1888. However it appears this Square shaped souvenir plate was made around 1896 to commemorate the dedication of this Monument. Impressed Rd 6559 backmark.

Saunderson Grammar School, Burlington, Iowa, USA

Not shown in Pattern Book. Pattern # not assigned.



Impressed Rd 6559 backmark

Old Town Hall, Marbletown, Mass USA

Not shown in Pattern Book. Pattern # not assigned.



Impressed Rd 6559 backmark

Bristol, UK Crest

Not shown in Pattern Book. Pattern # not assigned.

